

SECTION 5C

PARKING BRAKE

NOTICE: When fasteners are removed, always reinstall them at the same location from which they were removed. If a fastener needs to be replaced, use the correct part number fastener for that application. If the correct part number fastener is not available, a fastener of equal size and strength (or stronger) may be used. Fasteners that are not reused, and those requiring thread locking compound will be called out. The correct torque value must be used when installing fasteners that require it. If the above conditions are not followed, parts or system damage could result.

CONTENTS

<u>SUBJECT</u>	<u>PAGE</u>
Description	5C-1
On-Vehicle Service	5C-1
Brake Shoe Adjustment	5C-1
Lever Adjustment.....	5C-2
Parking Brake Disassembly.....	5C-3
Specifications.....	5C-4

DESCRIPTION

The parking brake used on this vehicle is a mechanically operated internal expanding-type drum brake. It is mounted on the rear of the

transmission case. A control cable is routed into the cab and is connected to a lever under the instrument panel to the right of the steering column.

ON-VEHICLE SERVICE

Before doing any service on the parking brake, park the vehicle on a level surface, block the wheels, and place the brake in the release or off position.

- Back the adjuster screw off until there is 0.50 mm (0.02 in) between the shoe and drum. Check the gap at the middle of the shoe lining (figure 2).

BRAKE SHOE ADJUSTMENT

1. Disconnect the cable at the control lever.
2. Raise the rear axle so that the tires are off the floor.
3. Rotate the drum to align one of the access holes with the adjusting screw. Remove the hole cover.
4. Move the camshaft lever side-to-side a few times to center the shoes.

Adjust

- Insert a screwdriver in the access hole and rotate the adjuster screw upward until the shoes drag on the drum (figure 1).

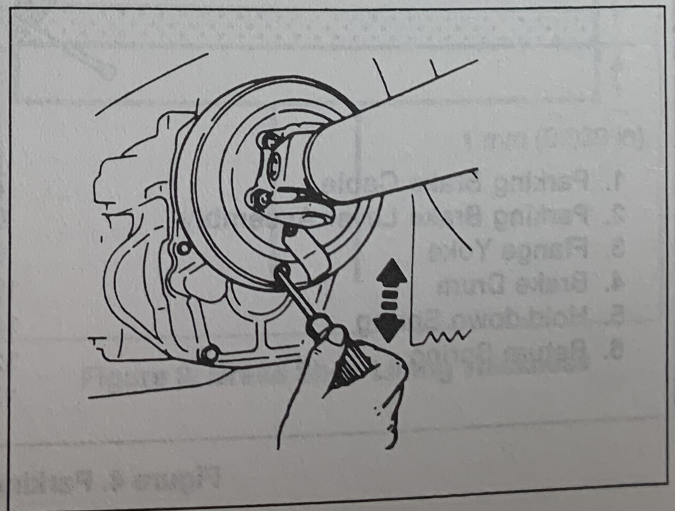
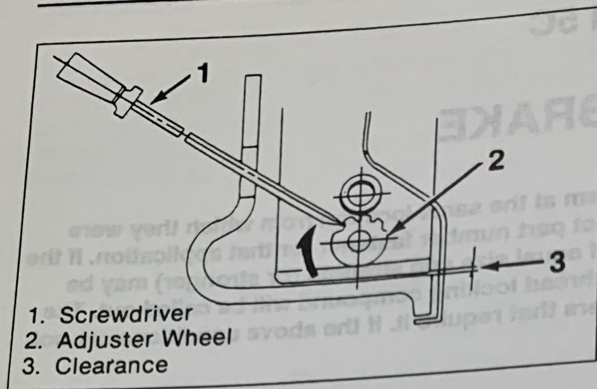


Figure 1. Adjusting the Brake Shoes

5C-2 PARKING BRAKE



1. Screwdriver
2. Adjuster Wheel
3. Clearance

Figure 2. Brake Shoe Clearance

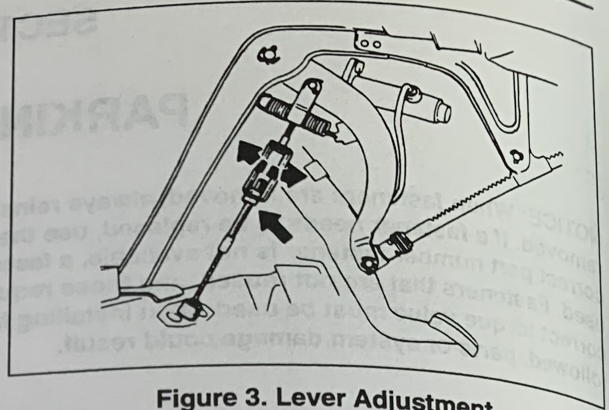
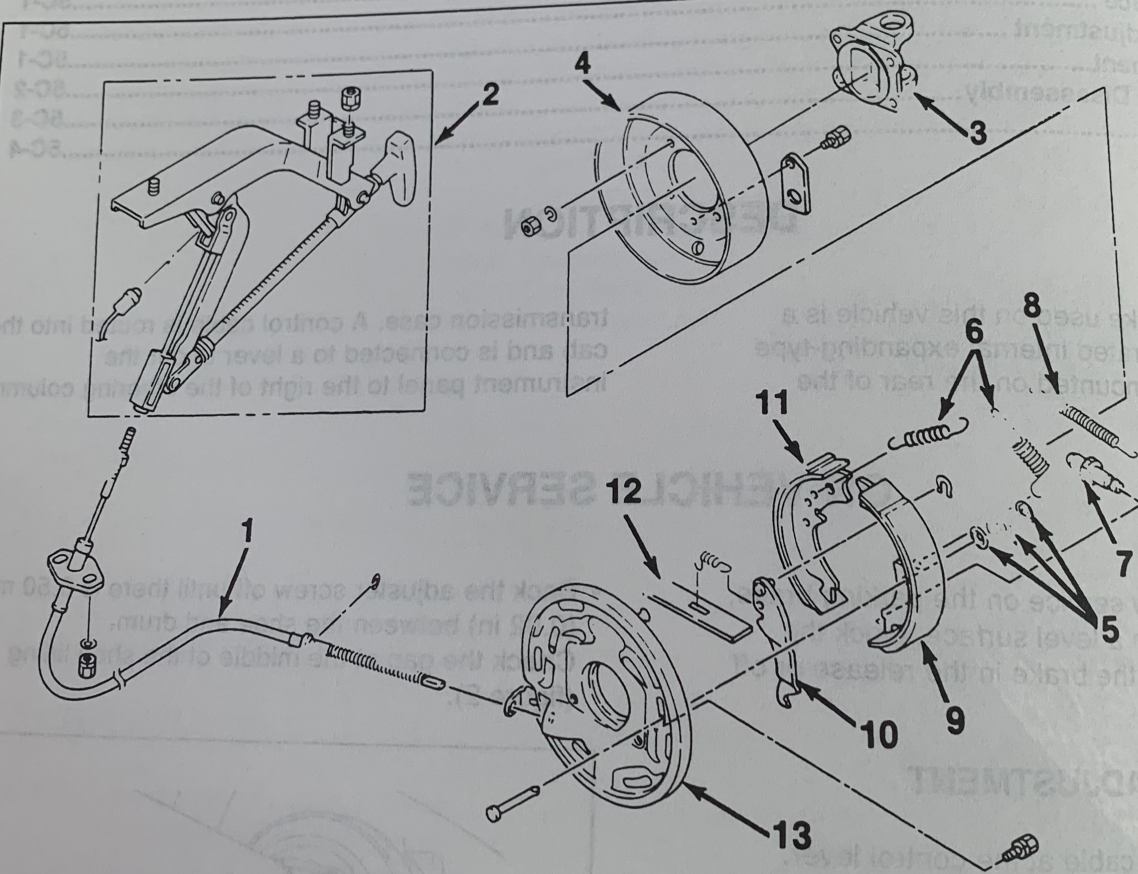


Figure 3. Lever Adjustment

LEVER ADJUSTMENT

1. Block the vehicle's wheels.
2. Release the parking brake.

3. Loosen the adjuster nut and adjuster at the brake lever (figure 3).



1. Parking Brake Cable
2. Parking Brake Lever Assembly
3. Flange Yoke
4. Brake Drum
5. Hold-down Spring
6. Return Spring

7. Adjuster Assembly
8. Adjuster Spring
9. Trailing Shoe
10. Lever
11. Leading Shoe
12. Strut
13. Support Plate

Figure 4. Parking Brake Components

Adjust

- Pull the brake lever out 9-14 notches.
 - Tighten the adjuster and adjuster nut.
4. Check for brake-holding ability.

PARKING BRAKE DISASSEMBLY

Disassemble (Figures 4, 5 and 6)

- Block the vehicle wheels.
 - Release the parking brake.
1. Loosen the adjuster nut (16) and disconnect the cable (15) by turning the adjuster (14) (figure 5). Loosen and remove the bolts holding the cable to the floor and pull out the cable (figure 6).
 2. Parking brake lever (2).
 - Retaining bolts from under the dash
 - Lever assembly
 3. Parking brake cable (1) from support plate (3).
 4. Flange yoke (3).

5. Drum (4).
6. Hold-down springs (5).
7. Return springs (6).
8. Adjuster assembly (7).
9. Adjuster spring (8).
10. Trailing shoe with lever (9 and 10).
11. Parking brake cable from lever.
12. Leading shoe (11).
13. Strut (12).

Measure

1. Brake drum (figure 7).

	Standard	Limit
Inside Diameter	190 mm (7.48 in)	191 mm (7.52 in)
Out-of-Round	0.05 mm (0.002 in) or less	

2. The brake shoe lining thickness should not be less than 1 mm (0.039 in) (figure 8).

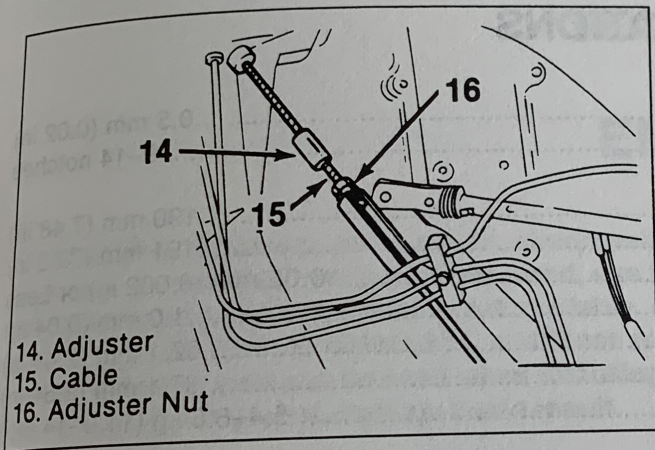


Figure 5. Disconnecting Cable

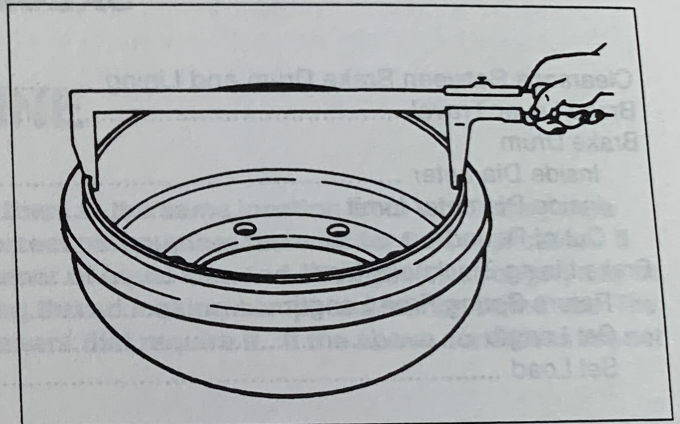


Figure 7. Brake Drum Measurements

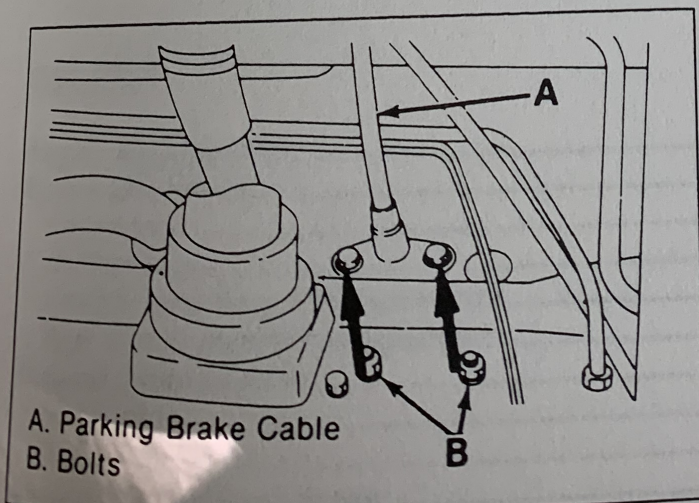


Figure 6. Cable Removal

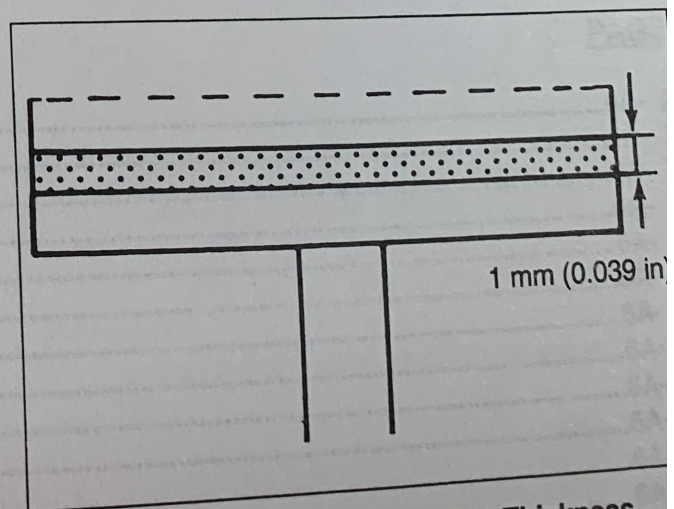


Figure 8. Brake Shoe Lining Thickness

5C-4 PARKING BRAKE

3. Return springs (figure 9).
 Free Length: 62.1 mm (2.44 in)
 Set Length: 66.9 mm (2.63 in)
 Set Load: 5.4–6.6 kg (11.9–14.6 lb)

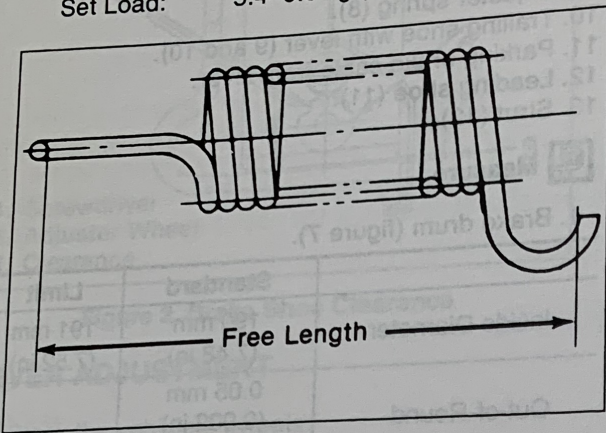


Figure 9. Return Spring Free Length

Assemble (Figures 4, 5 and 6)

1. Parking brake cable (1) to lever (10) and trailing shoe (9).
2. Leading shoe (11).
3. Trailing shoe (9).
4. Hold-down springs (5).
5. Strut (12).
6. Return springs (6).
7. Adjuster spring (8).
8. Adjuster assembly (7).
9. Drum (4).
10. Flange yoke (3).
11. Parking brake cable (1) to support plate (13).
12. Parking brake lever (2).
13. Parking brake cable through floor.
 - Bolts to hold cable to floor (figure 6).
14. Cable in adjuster (figure 5).
 - Adjuster
 - Adjuster nut

SPECIFICATIONS

Clearance Between Brake Drum and Lining	0.5 mm (0.02 in)
Brake Lever Travel	9–14 notches
Brake Drum	
Inside Diameter	190 mm (7.48 in)
Inside Diameter Limit	191 mm (7.52 in)
Out of Round	0.05 mm (0.002 in) or Less
Brake Lining Thickness Limit	1.0 mm (0.04 in)
Return Spring Free Length	62.1 mm (2.44 in)
Set Length	67.1 mm (2.64 in)
Set Load	5.4–6.6 kg (11.9–14.6 lb)