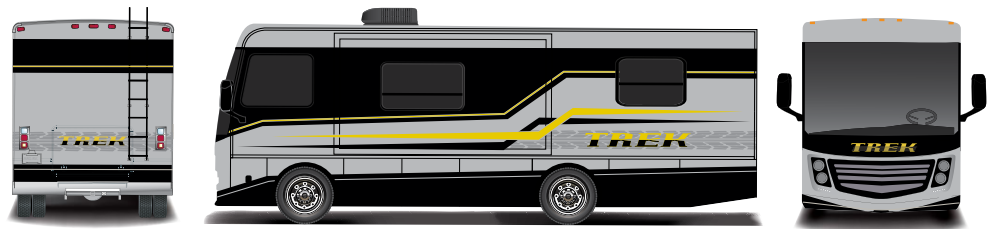


2016 | CLASS A GAS

TREK



Taking originality and innovation to new heights.



TOP FEATURES

- Ford® 16,000lb chassis w/362HP V10
- Automatic Hydraulic Levelers Standard
- Bus-Class Aluminum Luggage Doors
- Vetrolite® Ultra-Thick Wall Fiberglass
- Interlocking Aluminum Construction
- Vacu-bond™ Wall Lamination
- Axalta® Premium Full-Body Paint
- Intense Halogen Projector Headlamps w/LED Accents
- Power Awning w/LED Lighting
- Side-View Camera Package
- LED Interior Task Lighting
- Frameless Tilt-Out Windows
- Soft-Touch Ceiling w/Ducted Air
- Exterior Entertainment Center
- Bedroom 19" LED TV Standard
- Queen Size Drop Down Bed w/TV
- Solid-Surface Countertops
- Pull-Out Drawer in Dinette Base
- Oversized Exterior Storage

Bending the rules a bit has never been so much fun. Whether you're the type to skip out and hit the road a few minutes early or toss the GPS out the window and take a scenic-route detour, Trek is the perfect companion to an unconventional life with its original approach to maximizing space. With unlimited ways to stow, what are you waiting for? Let's break convention.



TREK ROOM

PATENT PENDING

REK-Room - A spacious bedroom with complete walk-around queen-sized bed and side-wall wardrobe units. Rek Room features a patent-pending bed-lift mechanism which converts a raised bed into a full-wall walk-in closet with dual-mirrored wardrobe doors and dressers.



TREK TRUNK

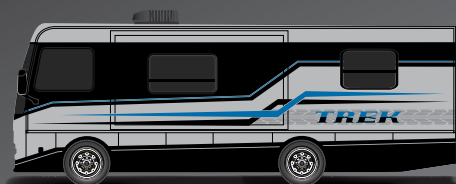
PATENT PENDING

TREK-Trunk - A multi-functional compartment for easily accessible storage. During travel, the raised Trek Room provides a colossal amount of basement storage for travel equipment, entertainment and patio items, adventure and tourism gear, and more.

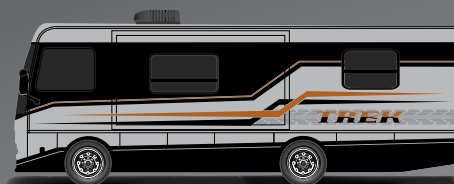


2016 Graphics and Décor

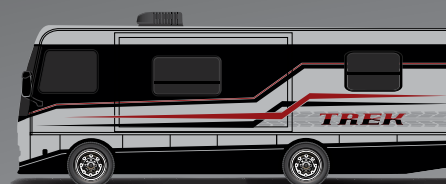
Visit us at trekmotorhome.com



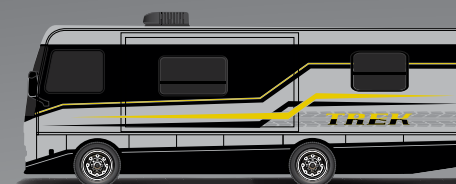
FLASH BLUE



FLASH ORANGE



FLASH RED



FLASH YELLOW



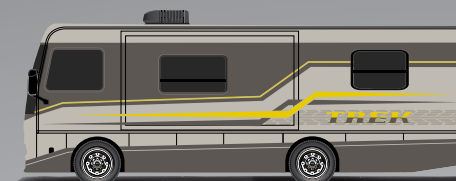
GLOW BLUE



GLOW ORANGE



GLOW RED



GLOW YELLOW

Inside and out, Trek offers a wide selection of colors, styles, and finishes. From the moment you lay eyes on Trek, the high-style graphics and décor collections welcome you with gracious beauty and contemporary design. We've paid attention to every detail. Wherever you are, you'll feel right at home.

DRAGONFLY

SOFA

ACCENT

BEDSPREAD

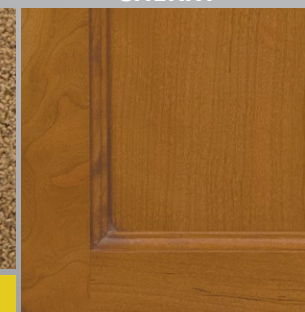
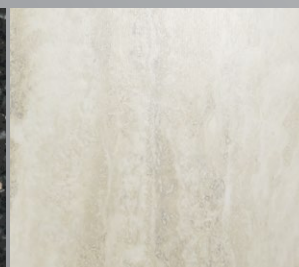
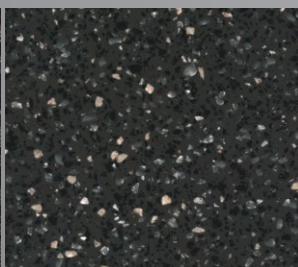
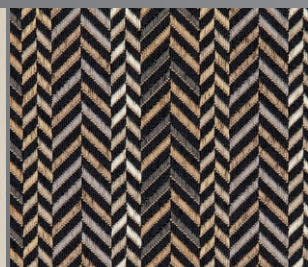
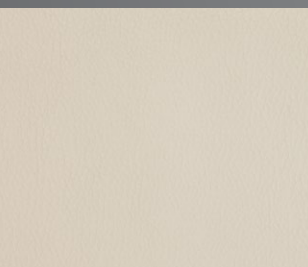
COUNTERTOP

FLOORING

CARPET

CABINETRY

GLAZED FULTON CHERRY



FIREFLY

SOFA

ACCENT

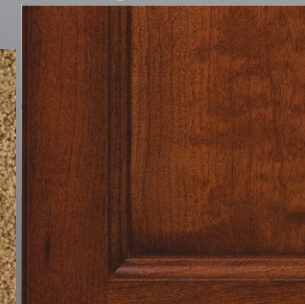
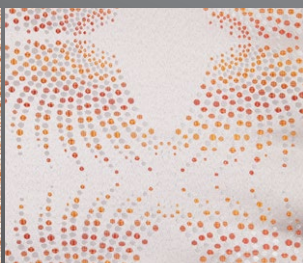
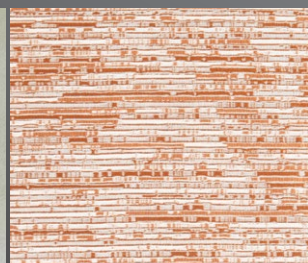
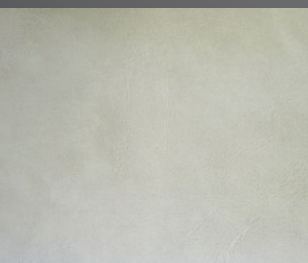
BEDSPREAD

COUNTERTOP

FLOORING

CARPET

GLAZED HILLSIDE CHERRY



*Interior décors and/or woods may be subject to change. Printed samples are representations of actual fabrics and may be limited due to standard printing technology.

Standard Features and Options

INTERIOR THROUGHOUT

- 12V Water Pump, Demand Operation
- 15,000 Btu/h Ducted Air Conditioner w/Chill Grille
- 6 Gallon Propane Water Heater w/Electronic Ignition
- AC/DC Load Center w/12V Converter/Battery Charger
- Auxiliary Batteries w/ Disconnect Switch
- Central Monitor Panel
- Complete PEX Plumbing System
- Deluxe Roller Bearing, Full Extension Drawer Guides & Transit-Ship Locks
- Full Vinyl Tile
- GFI Circuit Protection
- Hardwood Raised Panel Cabinet Doors
- Cabinet Door w/Hidden Euro Hinges
- Ozite Lined Shelves in Overhead Cabinets
- Manual Night Shades in Living Room & Bedroom
- Premium Lexington Constructed Furniture
- Water Heater Bypass Valve
- Water Pump w/On/Off Switches at Galley & Lavy
- Whole-Coach Water Filtration System
- Bedroom 19" LED TV
- LED Interior Task Lighting
- Soft-Touch Ceiling w/ Ducted Air
- Pull-Out Drawer in Dinette Bench Base
- Queen Size Drop Down Bed w/TV

DRIVER CONVENIENCE

- (2) 12V Power Jack
- 3-Point Seatbelts at Driver & Passenger Seats
- Auxiliary Emergency Start Assist Switch on Dash
- Cruise Control
- In-Dash AM/FM/Radio w/CD Player
- Remote/Heated/Rear-View Mirrors w/Side-View Cameras
- Radio Switch Main/Auxiliary Power
- Soft Touch Premium Lexington Driver/Passenger Captain's Chair w/Reclining Back/Slide Controls
- Tilt Wheel
- Power Windshield Privacy/ Night Shade
- Driver/Passenger Reading Lights & Magazine Rack
- Passenger side (2) 110V Outlets
- Touch Screen Dash Radio

LIVING ROOM

- 28" LED Wide-Screen TV w/ Remote & DVD Player
- Ceiling Lights w/Wall Switches (Entry & Bath)
- Dream Dinette Table w/2 Cup Holders, Convertible for Sleeping

GALLEY

- 3 Burner Cooktop w/High Output/Piezo Igniter
- Range Hood w/Light & Fan
- Cooktop Cover
- Solid Surface Countertops w/Bull Nose Edge
- Dometic® 6 cu. ft. Refrigerator/Freezer
- Microwave Oven w/ Electronic Touch Pad
- Power Roof Fan-Tastic® Vent Fan
- Raised Panel Refrigerator Inserts
- Residential Size Double Bowl Sink
- Decorative Backsplash

BEDROOM

- Bedspread
- Queen Bed w/Mattress
- Reading Lights in Bed Overhead Cabinet
- 19" LED TV
- RekRoom - Patent Pending (Wardrobe)

BATHROOM

- Bath Door w/Residential Passage Lock
- Dometic China Bowl Toilet w/Hand Sprayer
- Medicine Cabinet w/Wood Construction
- Molded ABS Shower/Tub w/Surround
- Large Sink w/Residential Style Faucet
- Frosted Glass Shower Door
- Shower Head w/Flexible Hose Extension
- Skylight/Roof Vent w/12V Fan
- Dual Towel Bars
- Hand Towel Rack

SAFETY/CONVENIENCE (INTERIOR)

- 10 lb. ABC Fire Extinguisher
- Carbon Monoxide Detector/ Alarm
- Exterior & Interior Entry Assist Handle
- Multiple Seatbelt Locations
- Propane Detector/Alarm
- Smoke Detector/Alarm
- Egress Window



EXTERIOR THROUGHOUT

- Dometic Awning Above All Slide-Out Rooms
- Dual 6V Deep Cycle Auxiliary Batteries
- High Gloss Smooth Fiberglass Exterior
- Large 1" (Inside Diameter) Water Tank Drain
- Onan® 4.0kW MicroQuiet Generator
- Axalta® Premium Full-Body Paint
- Power Awning w/LED Lighting
- Rear Ladder
- Stainless Steel Wheel Simulators
- Toilet Tank San-T-Flush™ System
- Trailer Hitch w/7 Pin Electrical Hook-Up
- Valve Stem Extenders
- Flexible Shower Hose & Faucet in Utility Compartment
- Automatic Hydraulic Levelers
- Bus-Class Aluminum Luggage Doors
- Vetrolite® Ultra-Thick Wall Fiberglass
- Interlocking Aluminum Luggage Doors
- Frameless Tilt-Out Windows
- Vacu-bond™ Wall Lamination
- Intense Halogen Projector Headlamps w/LED Accents
- Remote/Heated Rear-View Mirrors w/Side-View Cameras
- Exterior Entertainment Center

SAFETY/CONVENIENCE (EXTERIOR)

- 30 Amp, 30' Power Cord, Compartment Storage
- AC Duplex GFI Receptacle on Patio Side
- Amber Porch Light w/Interior Switch
- Automotive Safety Glass Windshield
- Entry Door w/Screen Door & Deadbolt Lock
- High Mounted Taillights
- Power Electric Step
- TrekTrunk - Patent Pending

STORAGE

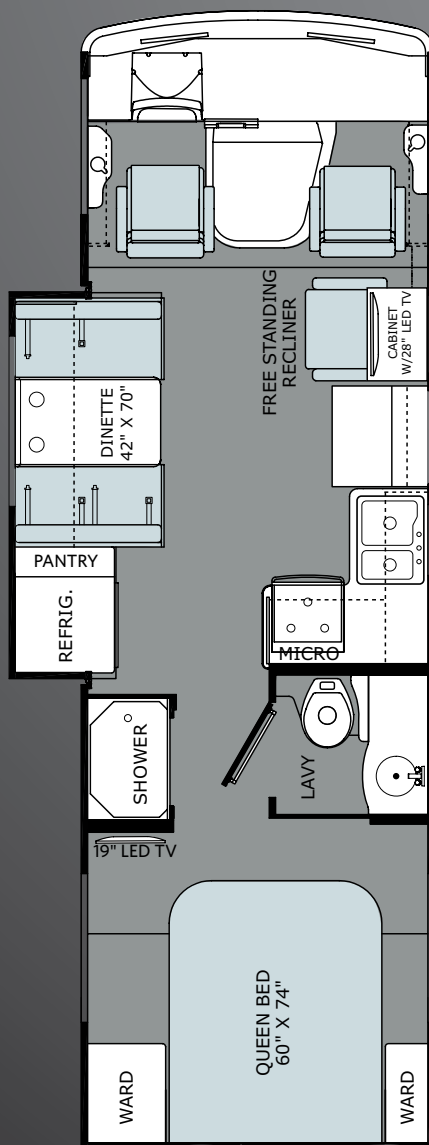
- Molded Cross Link Polyethylene Battery Compartment w/Lid
- Pass Through Storage
- Roto-Molded Polyethylene Luggage Compartments
- Slam Latch Luggage Doors
- Bus-Class Aluminum Luggage Doors

BODY STRUCTURE

- 26" Wide Radius Corner Entry Door w/Obscured Window
- Corrosion Resistant Aluminum Tube Hull Framing
- Full Basement Exterior w/Enclosed, Heated Holding Tanks & Luggage Compartments
- Molded Fiberglass Front Cap Vetrolite® Ultra-Thick Wall Fiberglass
- Radius Roof w/Ducted A/C
- Sidewalls Framed with 1 1/2" Aluminum Tubing
- Vacu-bond™ Floor
- Vacu-bond Hull Lamination Process

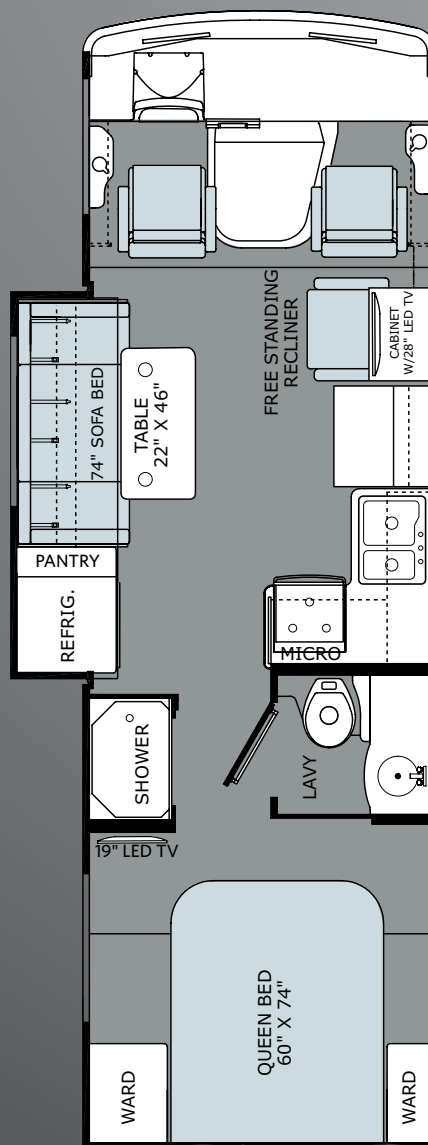
Trek Floor Plan

26HMD



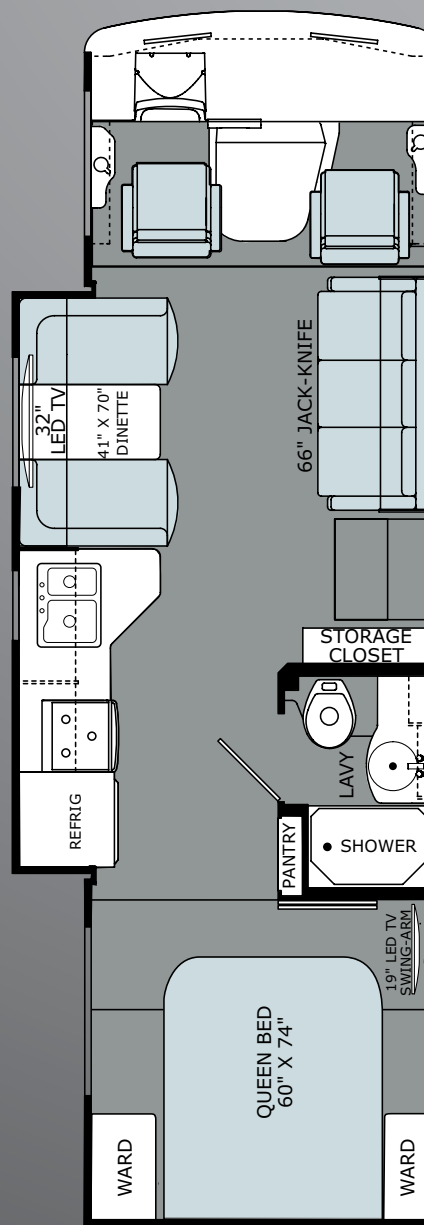
BED SHOWN IN THE LOWERED POSITION

26HMS



BED SHOWN IN THE LOWERED POSITION

29GS

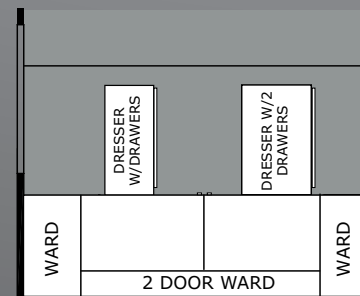


BED SHOWN IN THE LOWERED POSITION

FLOOR PLAN OPTIONS



STANDARD FEATURE



BED SHOWN IN THE RAISED POSITION

WEIGHTS & MEASUREMENTS

MODELS	26HMD	26HMS	29GS
Wheelbase (inches)	158"	158"	178"
GVWR (lbs) ¹	16,000	16,000	18,000
Front GAWR (lbs) ²	6,500	6,500	7,000
Rear GAWR (lbs) ²	11,000	11,000	12,000
GCWR (lbs) ³	21,000	21,000	23,000
Hitch Rating Weight (lbs) ^{†, ††}	5,000	5,000	5,000
Tongue Weight (lbs) [†]	500	500	500
Fuel Capacity (gal)	80	80	80

FORD® CHASSIS

Model: Ford® Chassis
Engine: 6.8L Triton V10 RPM
Transmission: 5-Speed,
 Automatic w/Overdrive

Alternator: 175 Amp
Torque: 457 lb-ft @ 3,250 RPM
Horsepower: 362HP

DIMENSIONS & CAPACITIES

MODELS	26HMD	26HMS	29GS
Overall Length ⁴	27' 10"	27' 10"	29' 10"
Overall Height (with A/C)	12'	12'	12'
Overall Width (maximum) ^{5, 6}	102"	102"	102"
Interior Height (maximum)	82"	82"	82"
Interior Width (maximum)	96"	96"	96"
Patio Awning Width	18'	18'	20'
Interior Storage (cu. ft.)	145	145	125
Exterior Storage (cu.ft.)	110	110	135
Fresh Water Holding Tank (gal)	50	50	50
Grey Water Holding Tank (gal)	35	35	35
Black Water Holding Tank (gal)	35	35	35
Appliance Propane Tank (gal) (WC) ⁷	14	14	14
Water Heater Tank (gal)	6	6	6

Addendums

1. GVWR (Gross Vehicle Weight Rating) is the maximum permissible weight of this fully loaded motorhome. The GVWR is equal to or greater than the sum of the (UVW) unloaded vehicle weight plus the (OCCC) occupant cargo-carrying capacity*.
2. GAWR (Gross Axle Weight Rating) is the maximum permissible loaded weight a specific axle is designed to carry.
3. GCWR (Gross Combined Weight Rating) is the value specified by the motorhome manufacturer as the maximum allowable loaded weight of this motorhome with its towed vehicle. Towing and braking capacities may be different. Refer to Trek and chassis manufacturer's manuals for complete information.
4. Length measured from front bumper to rear bumper (excludes accessories).
5. Excludes safety equipment and awnings.
6. Motorhomes feature a body width over 96" which will restrict your access to certain roads. Before purchasing, you should research any state and/or province road laws which may affect your usage.
7. Tank manufacturer's listed water capacity (WC). Actual propane capacity is 80% of water listing as required by the safety code.

† The chassis manufacturer recommends the installation of a supplemental brake control system to activate the brakes on the vehicle or trailer you are towing. Hitch receiver ratings expressed are maximum for the hitch receiver installed and may require the purchase of additional equipment that is dependent on the weight of the towed load. Consult with hitch receiver manufacturer for further information.

†† The Minimum Towable Load of this vehicle is the available weight capacity, up to GCWR, when the coach is fully loaded to maximum GVWR. However, if the coach is loaded to something less than maximum GVWR, that extra available weight capacity can be added to your Towable Load. For example, if your coach is loaded to 1000lbs less than maximum GVWR, your Towable Load increases accordingly. Do not exceed the hitch rating weight, GVWR or GCWR.

* UVW and OCCC are found on the label containing the federal certification tag in each RV.

TREK

ALLIED RECREATION GROUP



Visit Trekmotorhome.com

WARRANTY INFORMATION:

Enjoy your next RV adventure with the peace of mind that comes with a 12 month/24,000 mile basic limited warranty; a 5 year/50,000 mile limited warranty on aluminum or steel frame structure. Review your coach's limited warranty in full for complete terms and conditions.

CONTACT US

To locate a dealer near you, visit our website at www.trekmotorhome.com or call (877) 466-6226. We can also be contacted at Trek Motorhome Customer Relations, P.O. Box 1007, Decatur, IN 46733.

IMPORTANT—PLEASE READ: Product information, photography and illustrations included in this publication were as accurate as possible at the time of printing. For further product information and changes, please visit our website at www.trekmotorhome.com or contact your local Trek Motorhome dealer. Prices, materials, design and specifications are subject to change without notice. All weights, fuel, liquid capacities and dimensions are approximate. Trek Motorhome has designed its recreational vehicles to provide a variety of uses for its customers. Each vehicle features optimal seating, sleeping, storage and fluid capacities. The user is responsible for selecting the proper combination of loads (i.e., occupants, equipment, fluids, cargo, etc.) to ensure that the vehicle's capacities are not exceeded.

YOUR LOCAL TREK DEALER IS: