

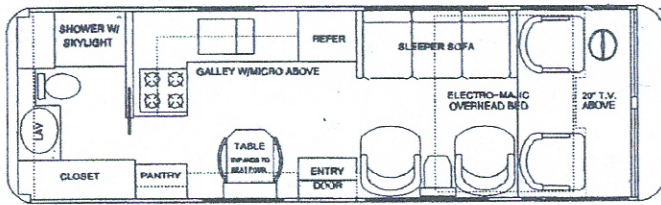
Specification Guide

- *Built by America's #1 Luxury Coach Manufacturer*
- *Super Efficient Isuzu Diesel Engine - Up to 15 MPG!*
- *Smart Bus Styling. More Living Space in a 24' Trek than in a 30' Conventional Coach!*
- *Real TurboCharged Diesel Power. Intercooled, for Maximum Hill-Climbing Power.*
- *Strong Steel Substructure - Light Aircraft Aluminum InfraStructure*
- *Beautiful Western Hardwood Cabinetry*
- *Fully Equipped Galleys, with Full-Size Appliances, Large Counters and Cupboards*
- *Patented Electro-Majic Bed. Hides in the Ceiling During the Day, Lowers "Electro-Majically" for Sleeping at Night. Available on all Models.*
- *A Driver's Dream! Tilt & Telescoping Wheel, Fully Instrumented Dash, Cruise Control, Exhaust Brake . . . All Standard!*

Standard Features

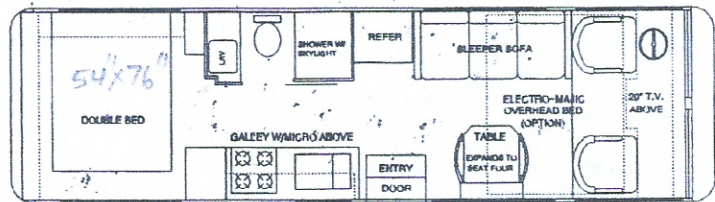
- | | |
|---|---|
| ■ 3.6 kW Onan MicroLite Generator | ■ Microwave/Convection Oven |
| ■ 13,500 BTU Roof Air Conditioning | ■ NorCold 7.5 cu.ft. Refrigerator / Freezer |
| ■ Dash Air Conditioning and Climate Control | ■ Deep Stainless Steel Double Sinks |
| ■ Back-up Monitor | ■ Stereo System w/Cassette |
| ■ 20" Color TV w/ Remote | ■ Cruise Control |
| ■ Trailer Hitch | ■ Power Driver Seat |
| ■ Fantastic Fan | ■ Large Shower w/ Skylight |
| ■ Amplified TV Antenna | ■ Intermittent Wipers |
| ■ Cable TV Hookup | ■ House Circuit Cut-Off Switch |
| ■ Expanding Dinette | ■ Electric Step |
| ■ Electro-Majic Bed (2400 & 2830 Models)
with TravaSak | ■ 6.0 gal. Gas Water Heater |

Floor Plans

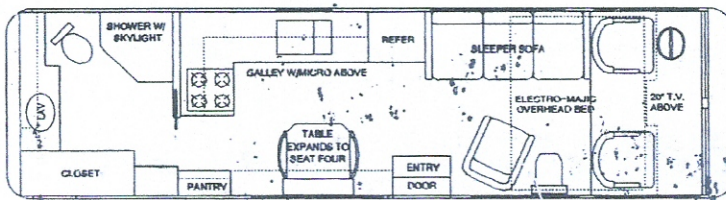
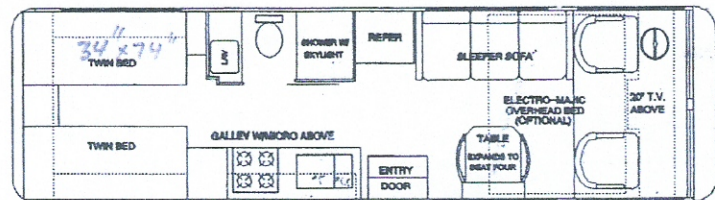


2400
Electro-Majic Bed
Rear Bath

2600
Double Bed

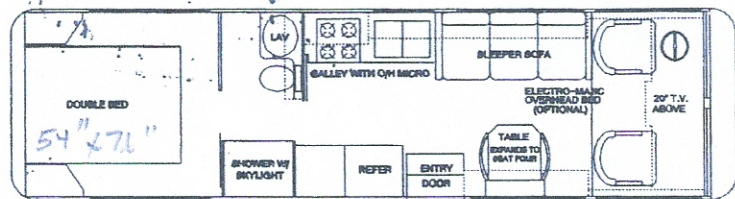


2600
Twin Beds

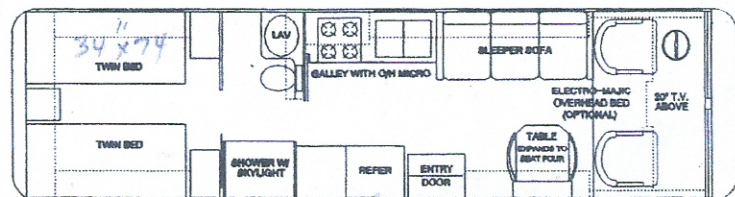


2830
Electro-Majic Bed
Rear Bath

2840
Double Bed



2840
Twin Beds



Available Options

- Roof Rack & Ladder
- ✓ ■ Electro-Majic Bed (2600 & 2840 Models)
with TravaSak
- X ■ Rear Mural
- Window Awnings
- ✓ ■ Wood Floor in Galley
- Custom Mural

Pathmaker Edition

- ✓ ■ Patio Awning 12'
- ✓ ■ Hydraulic Levelers
- 2. ■ Solar Panel
- 1000W Inverter
- 120V Residential Lighting
- ? ■ Air Horns

Warranty

Safari Warranty	1 year or 12,000 miles
Engine	3 years, unlimited mileage
Transmission & Drivetrain	2 years, unlimited mileage
Frame Rails	2 years, unlimited mileage
Engine Emissions	5 years, 100,000 miles
Batteries	12 months
Corrosion	4 years, unlimited mileage
Appliances	Individual Warranties

Specifications subject to change without notice or liability.
July 1, 1993

1994

Specifications

Model	2400	2600	2830	2840
Chassis Manufacturer	Isuzu			
Chassis Model	NPR			
Engine	4BD2-TC 3.9L 4-cylinder Diesel			
Engine Horsepower	135 @ 3000 rpm			
Engine Torque	255 lb/ft @ 1900 rpm			
Transmission	4-speed Automatic w/Overdrive			
Brakes	Front Disc / Rear Drum			
GVWR	13,250			
GCWR	17,600			
Wheel Base	150"	178"	178"	178"
Tires	215/85R-16E			
Dry Weight (Approx.)	10,500	10,750	11,000	11,000
Exterior Length	24'4"	26'6"	27'7"	27'7"
Exterior Height, w/ Low Profile Air	10'6"			
Chassis Batteries	2 @ 750 cca			
House Batteries	2 @ 105 amp-hr			
Alternator	70 amps			
Converter	50 amps			
Generator Model	Onan MicroLite			
Generator Output	3.6 kW			
LPG Tank	35 gals			
Freshwater	45 gals			
Black Holding	30 gals			
Grey Holding	30 gals			
Fuel Tank	33 gals			
Bed Size - Queen	n/a	54"x76"	n/a	54"x76"
Bed Size - Twin	n/a	34"x74"	n/a	34"x74"
Bed Size - Electro-Majic	52"x75"	52"x75"	52"x75"	52"x75"
Storage	37 cubic ft.	46 cubic ft.	49 cubic ft.	49 cubic ft.

Chassis & Mechanical

- Electro-matic 4-Speed Automatic Transmission w/Overdrive
- Turbo-Charged, Inter-Cooled Isuzu Diesel Engine.
- 4-Cylinder, In-line Overhead Valve. Cast Iron Blocks
- Autothermatic Pistons (Less Prone to Noise and Wear)
- Semi-Elliptical Leaf Spring Suspension
- Exhaust Brake
- Tilt & Telescopic Steering Wheel
- In-Dash AM/FM Cassette Stereo
- Vacuum Hydraulic Brakes
- Aluminum Skirts
- Stainless Steel Wheel Liners