

TREK[®] 2006 SAFARI[®]



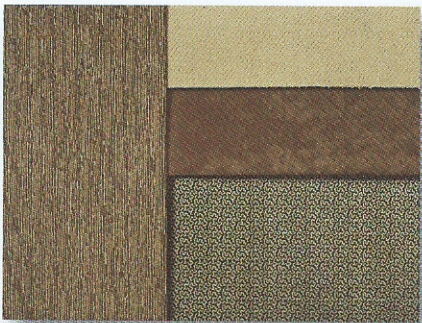
Live out loud.



Outback
Lodge



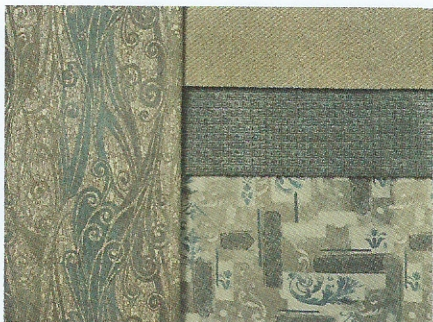
Latin Beat



Island
Oasis



Windjammer



Alder Hardwood

DEDICATED TO YOUR LOVE FOR SPONTANEOUS ADVENTURES.

With drumroll and fanfare, we raise the curtain on the 2006 Trek. This remarkable shorter coach boasts numerous upgrades, starting with the lustrous finish of deluxe full-body paint. Newly designed side-hinged baggage doors offer greater convenience, and a new one-piece fiberglass roof enhances strength and durability. Other new highlights include fully automatic hydraulic leveling and a pre-wire for a supplemental braking system for your towed vehicle. The Trek continues to wow you with its ingenious interior, featuring the exclusive Electro-Majic™ bed — proving once again that this is the perfect standby for your every whim.

TREK FLOORPLANS

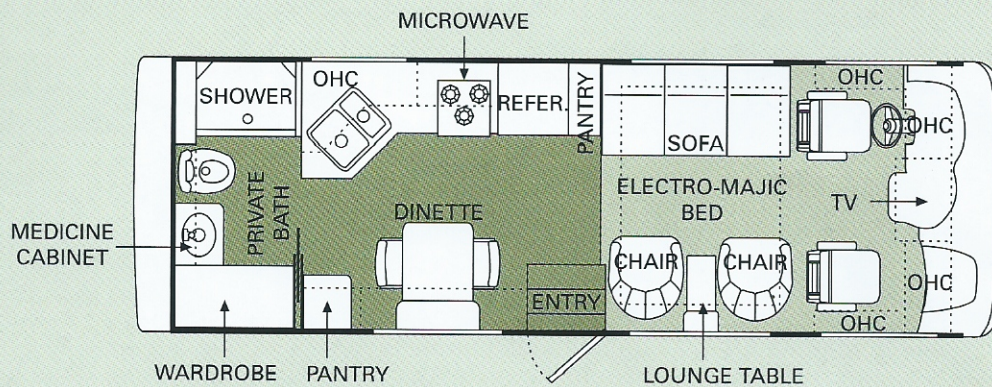


Carpet

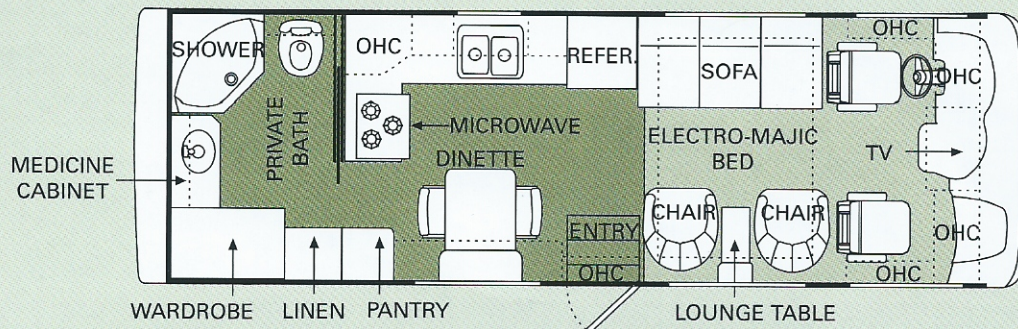


Laminated Tile or Optional Plank Flooring

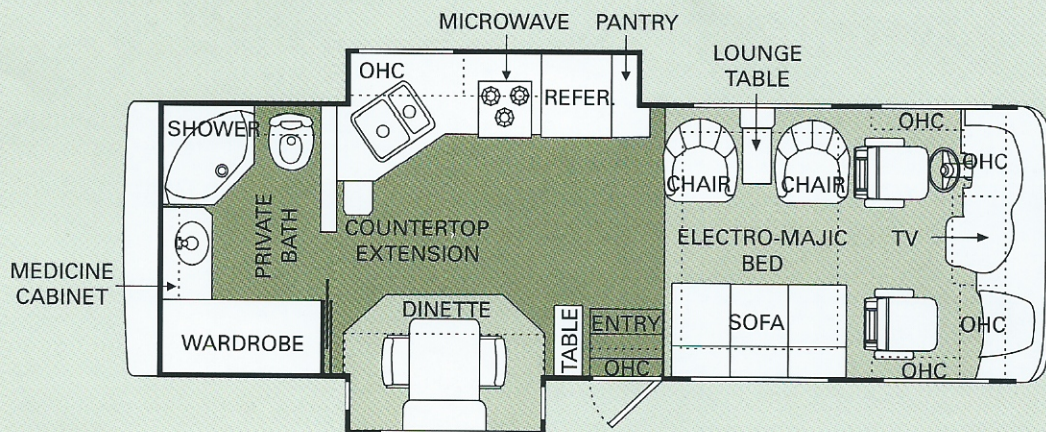
27RB



28RB2



29RBD



WEIGHTS & MEASUREMENTS

	27RB	28RB2	29RBD
Weights (Workhorse 18,000 Chassis) (Lbs.)			
Gross Vehicle Weight Rating	18,000	18,000	N/A
Gross Combined Weight Rating*	22,000	22,000	N/A
Front Gross Axle Weight Rating	7,000	7,000	N/A
Rear Gross Axle Weight Rating	12,000	12,000	N/A
Weights (Ford 20,500 Chassis) (Lbs.)			
Gross Vehicle Weight Rating	20,500	20,500	20,500
Gross Combined Weight Rating*	25,500	25,500	25,500
Front Gross Axle Weight Rating	7,000	7,000	7,000
Rear Gross Axle Weight Rating	13,500	13,500	13,500
Weights (Workhorse 20,700 Chassis) (Lbs.)			
Gross Vehicle Weight Rating	20,700	20,700	20,700
Gross Combined Weight Rating*	25,700	25,700	25,700
Front Gross Axle Weight Rating	7,500	7,500	7,500
Rear Gross Axle Weight Rating	13,500	13,500	13,500
Measurements			
Wheelbase	178"	178"	190"
Overall Length	27' 10"	29' 5"	30' 5"
Overall Height, Including A/C (Ford)	11' 6"	11' 6"	11' 6"
Overall Height, Including A/C (Workhorse)	11' 10"	11' 10"	11' 10"
Overall Height, under Electro-Majic Bed / Throughout	74"/78"	74"/84"	74"/84"
Interior Width	94.5"	94.5"	94.5"
Exterior Width	100.5"	100.5"	100.5"
Tank Capacities** (Gal.)			
Water Heater	6	6	6
Gray Tank	40	40	40
Black Tank	40	40	40
Fresh Tank	60	60	60
LP Tank***	24	24	24

* Towing capacity is limited by GCWR; your vehicle's towing capacity is the difference between the GCWR and the actual vehicle weight, including all water, fuel, passengers and cargo. Your towed vehicle should be equipped with auxiliary brakes if the weight of the towed vehicle exceeds 1,000 lbs. Consult your Owner's Manual for further towing information.

** All tank capacities are estimated based upon calculations provided by the tank manufacturers and represent approximate capacities. The actual "usable capacity" may be greater or less than the estimated capacities based upon fabrication and installation of the tanks.

*** Actual filled LP capacity is 80% of listing due to safety shut-off required on tank.

Component part and appliance manufacturers issue limited warranties covering those portions of the recreational vehicle not covered by the limited warranties issued by Monaco Coach Corporation. To learn which specific component parts and appliances are excluded from the limited warranties issued by Monaco Coach Corporation, please contact your selling dealership or Monaco Coach Corporation directly, or review the warranty packet inside the recreational vehicle.

Due to the large variety of options and floorplan arrangements available to our customers, actual weights for each unit can differ significantly. Safari provides a weight sticker on each unit we produce which includes that unit's tank capacities and approximate weight. Consult your local Safari dealer for unit availability and further information. The information printed in this brochure reflects product design, fabrication, and component parts at the date of printing. The manufacturer reserves the right, at any time, to make changes in product design or material or component specifications as its sole option, without notice. This includes the substitution of components of a different brand or trade name, which will result in comparable performance. All information printed in this brochure is subject to change after the date of printing. Some features shown or mentioned in this brochure are optional and may only be available in selected floorplans. Photographs may show props or decorations that are not standard equipment on Safari models. Safari, the Safari logo and its design, are registered trademarks. All other products and company names are trademarks and/or registered trademarks of their respective holders.

While the color of the motorhome's exterior and the interior fabrics depicted in this sales brochure are fair and reasonable depictions, the colors depicted may not be an exact match of the actual colors because of the variances in photo-processing and variances caused by inserting the photographs within the sales brochure. Due to product improvements, changes during the model year and/or transcription errors that may occur, information represented within this brochure may not be accurate at the time of your purchase. If certain information is significant to your purchasing decision, please confirm the information with your dealer prior to submitting your order.

The actual overall length of the recreational vehicle may differ from that indicated in the brochure due to variances in the manufacturing process and/or installed components. The actual length may be greater or less than that indicated.

Body Construction

- Alumaframe® Superstructure
- Steel Cage Cockpit Construction
- Peaked One-Piece Fiberglass Roof with Fiberglass Insulation
- Smooth Gel Coat Fiberglass Exterior Walls
- Front and Rear Molded Fiberglass Caps
- Aluminum Framed Floor on Steel Trusses
- Truss System: Standardize Trusses to 30" Height
- Laminated Structurwood™ Flooring
- Interior Paneling with 3/4" Insulation
- Foam Insulated Floor Framing with 3-Ply Underbelly
- One-Piece Engine Cover Lid
- Power Heated Remote Exterior Mirrors
- Fog Lights
- Low-Profile Sealed LED Marker Lights
- New Style Taillights
- Side-Hinged Baggage Doors; All Door Locations with Redesigned Extrusion and Latch Locations

- One-Piece Polyethylene Storage Compartment
- Wheel Mud Flaps
- Integrated Metal Fuel Door with Lock
- Deluxe Full-Body Paint
- Interior Rubber Entry Steps with Stepwell Cover
- Exterior Double Entry Steps
- Slide-Out Battery Tray
- Undercoating

Options

- Rear Ladder
- Mural on Rear Cap
- Front-Mount Chrome Power Heated Remote Exterior Mirrors
- 3M Film Front Mask
- Full-Length Mud Flap

Workhorse Chassis/Engine/Suspension (18,000 Lbs.)

- 8.1L V-8 Gasoline Engine with Electronic Fuel Injection
- Engine Displacement: 8.1L/496 Cu. In.
- Power: 340 HP
- Torque: 455 lbs./ft.
- 4-Speed Automatic Transmission with Overdrive
- Fuel Tank Capacity 75 Gallon
- 145 Amp Alternator
- Rear Axle Ratio: 4.63:1
- Radial Tires: 225/70R x 19.5F
- Stainless Steel Wheel Liners
- Leaf Spring Suspension
- ABS Brake System
- Fully Automatic Hydraulic Leveling System
- Pre-Wire for Supplemental Braking System
- Hitch Receiver with Dual Connector 4-Pin or 7-Pin (4,000 Lbs.)
- SmartStructure II

Ford Chassis/Engine/Suspension (20,500 Lbs.)

- 6.8L 3-Valve V-10 Gasoline Engine with Electronic Fuel Injection
- Engine Displacement: 6.8L/415 Cu. In.
- Power: 362 HP
- Torque: 457 lbs./ft.
- TorqShift 5-Speed Automatic Overdrive Transmission with Tow/Haul Mode
- New Transmission Oil Temperature Gauge
- Fuel Tank Capacity 75 Gallon
- 130 Amp Alternator
- Rear Axle Ratio: 5.38:1
- Radial Tires: 245/70R x 19.5F
- Wheel/Rims with Chrome Wheel Covers
- Leaf Spring Suspension
- Front and Rear Disc, 4-Wheel Anti-Lock Brakes
- Heavy-Duty Front Track Bar with Bilstein® Shock Absorbers
- Fully Automatic Hydraulic Leveling System
- Pre-Wire for Supplemental Braking System
- Hitch Receiver with Dual Connector 4-Pin or 7-Pin (5,000 Lbs.)
- SmartStructure II

Workhorse Chassis/Engine/Suspension (20,700 Lbs.)

- 8.1L V-8 Gasoline Engine with Electronic Fuel Injection
- Engine Displacement: 8.1L/496 Cu. In.
- Power: 340 HP
- Torque: 455 lbs./ft.
- 5-Speed Automatic Transmission with Overdrive
- Fuel Tank Capacity 75 Gallon
- 145 Amp Alternator
- Rear Axle Ratio: 4.88:1
- Radial Tires: 245/70R x 19.5F
- Stainless Steel Wheel Liners
- Leaf Spring Suspension
- ABS Brake System
- Fully Automatic Hydraulic Leveling System
- Pre-Wire for Supplemental Braking System
- Hitch Receiver with Dual Connector 4-Pin or 7-Pin (5,000 Lbs.)
- SmartStructure II

Cockpit

- Fiberglass Two-Toned Automotive Dash with Gray Hurricane Instrumentation Panel
- CD Player/Radio with Four Speakers
- Multi-Positioned Sunvisors
- Rear Vision System with Audio and Adjustable Camera
- Intermittent Windshield Wipers
- Tilt Steering Wheel
- Cruise Control
- Power Steering
- Air Horn Roof Mounted
- Wood Center Console on Engine Cover, Recess Tray with Rubber Mat and Plastic Two-Tier Cup Holders; Front Tip-Door Ford/Front Drawer Workhorse Chassis

continued on page 6

Cockpit (continued)

- Soft Touch Vinyl Pilot and Co-Pilot Seats
- Six-Way Power Pilot Seat
- Six-Way Power Co-Pilot Seat
- Carpeted Driver and Passenger Floor Mats
- Wood Framed Cabinet Doors with Smoked Glass over Front Entertainment Center Systems
- Directional Map Lights on bottom of TV Cabinet
- Secure Front Cab over TVs with Steel Framing

Options

- Power Sunvisors
- Pilot and Co-Pilot Side Window Pull-Down Sun Shades
- CB Radio Prep
- 3-Camera Rear Vision System with Audio and Adjustable Center Camera
- Driver's Side Door with Electric Window
- Ten Disc CD Player

Appliances and Accessories

- Large Double-Door Refrigerator with Ice Maker
- High-Output 3-Burner Cooktop without Oven
- Bi-Fold Range Covers
- Spacesaver Convection Microwave with Touch Control
- 24" Flatscreen Stereo Color TV with Remote Control in Cockpit Overhead
- TV Antenna Wineguard®
- DVD Prep and Video Control Box with Booster
- Exterior Hook-Ups for DSS Dish and Cable
- Interior Cable TV Hook-Up and Telephone Jacks
- Digital Satellite System Prep
- Exterior Gas Line Hook-Up Prep for LP Accessories

- Home Theater System with DVD Player with Surround Sound Speakers

Options

- Large Four-Door Refrigerator with Ice Maker (27RB)
- Large Double-Door Refrigerator with Ice Maker 10 Cu. Ft.
- High-Output Three-Burner Range with Oven
- Fully Automatic Digital Satellite System
- Exterior Entertainment Center, CD Player Radio with Two Speakers (N/A: 29RBD)

Interior

- Alder Hardwood Cabinetry
- Solid Wood Raised Panel Cabinet Doors on Overhead Cabinets, Base Cabinets and Wardrobes
- Raised Panel Refrigerator Inserts
- Decorative Wallboard
- Self-Supporting Top-Hinged Overhead Storage Doors and Positive Catches on All Other Doors
- Heavy-Duty Ball Bearing Drawer Guides
- Wood Cabinet Drawer Boxes
- Wood Interior Grab Handle on Cabinet at Entry Door (29RBD)
- Black Entry Rail for Stepwell
- Antique Brass Cabinetry Hardware and Bath Accessories
- Solid Surface Kitchen Countertop with Stainless Steel Sink, Pullout Faucet and Two Sink Covers
- Decorative Design Bevel V-Grooved Mirrors for Backsplash behind the Cooktop
- Beveled V-Grooved Mirrors below Corner Cabinet by Dinette (N/A: 29RBD)
- Kitchen Countertop Extension (29RBD)
- Toe Kicks to Kitchen and Bath Lavatory Base Cabinets
- Solid Surface Bath Countertop with Integrated Sink
- Silverware Tray Kitchen Base Cabinet
- Kitchen Overhead Cabinets with Adjustable Shelf (N/A: 29RBD)

- Kitchen Pantry next to Refrigerator with Adjustable Shelves in Upper Cabinet and Three Drawers below (N/A with Four-Door Refrigerator Option)(N/A: 28RB2)
- Laminated Tile Flooring in Bath and Kitchen, Flooring to Include Entry Door
- Nylon Carpeting with Pad
- Soft Touch Padded Vinyl Ceiling
- Wood Slide-Out Fascia with Vinyl Inserts (29RBD)
- Decorative Picture on Refrigerator Wall, Pantry Wall or Washer/Dryer Cabinet Wall (N/A: 29RBD)
- Raised Panel Bath Door
- Hardwood Bath Door Casing Opening Hallway Side
- Full-Length Mirror inside Bath
- Medicine Cabinet with Adjustable Shelves
- Sleepsac for Bed
- Pleated Day/Night Blackout Shades Throughout
- Soil Repellant on Fabric

Options

- Decors: Outback Lodge, Latin Beat, Windjammer, Island Oasis
- Plank Flooring Back of Cockpit Seats to Rear of Coach
- Plank Flooring in Kitchen and Bath

Furniture

- Electro-Majic™ Bed, Mattress Ladder and Sleepsac
- Hardwood Dinette Table with Two Freestanding Chairs and Two Folding Chairs
- Roadside: Fabric Sleeper Sofa, Two Pillows on All Sofas (N/A: 29RBD)
- Roadside: Flip-Up Party Table (Hardwood) between Two Barrel Chairs (29RBD)
- Curbside: Fabric Sleeper Sofa, Two Pillows on All Sofas (29RBD)
- Curbside: Flip-Up Party Table (Hardwood) between Two Barrel Chairs (N/A: 29RBD)

Options

- Roadside: Fabric Electric Sofa (N/A: 29RBD)
- Roadside: Fabric Wonder Bed Sofa (N/A: 29RBD)
- Roadside: Computer Table with Hardwood Top and OptimaLeather™ Euro-Recliner Chair with Ottoman (29RBD)
- Curbside: Fabric Electric Sofa (29RBD)
- Curbside: Fabric Wonder Bed Sofa (29RBD)
- Curbside: Computer Table with Hardwood Top and OptimaLeather™ Euro-Recliner Chair with Ottoman (N/A: 29RBD)
- Headboard and Footboard for Electro-Majic™ Bed

Electrical Systems and Lights

- 30 Amp 120V Distribution Panel and Power Cord
- 60 Amp Electronic 12V Converter
- Onan® 4.0 kW Generator
- Two 6V House Batteries
- Battery Disconnect Switches
- 12V and 110V Outlets in Cockpit Area
- Porch Light and Exterior Step Light on Same Switch
- Exterior Power Entry Step with Light
- Interior Stepwell Entry Step Lights
- Water Pump Switch in Service Bay Area and Convenience Center
- Lights in Outside Storage Compartments
- 120V Receptacles in Outside Storage Compartment
- Underhood Utility Light
- Receptacle and Phone Jack in Dinette Area
- Directional Map Lights Pilot and Co-Pilot Seats
- Snake Light Pilot and Co-Pilot Side Seat Locations
- Systems Convenience Center

- Fluorescent Light(s) with Night Light Function, under Kitchen Overhead
- Fluorescent Ceiling Lights Throughout
- Decorative Framed Galley Fluorescent Light
- Antique Brass Decorative Lighting Dinette Overhead
- Cosmetic Vanity Light 3 Bulb
- Antique Brass Bullet Lights in Living Area
- Halogen Lights under Living Room Overhead Cabinets

Options

- 50 Amp Service with Energy Management System
- 50 Amp 12V Distribution Panel and Cord
- Storage Compartment Tank Monitor Gauges
- 2,000 Watt Inverter with Two Additional 6V House Batteries
- Onan® Gold 5.5 kW Gas Generator
(Requires 50 Amp Service Option)

Plumbing and LP Systems

- Kitchen Stainless Steel Sink with Single Lever Satin Nickel Faucet with Pullout Sprayer
- Separate Satin Nickel Finish Faucet for Filtered Water
- Bath Faucet and Bath Hardware Antique Brass
- Demand Water System and Water Pump
- 6-Gallon LP Gas/Electric Water Heater with Electronic Ignition
- Winterization Valving System
- Water Heater Bypass Valve
- Style Plus Porcelain Toilet with Sprayer
- No-Fuss Flush Holding Tank Rinsing System
- Insulated Systems Compartment with Easy Access to Hook-Up
- New Style Shower inside Wet Bay with Hot/Cold Water
- Soap Dispenser inside Utility Bay

- Gravity and Pressurized Water Fill
- Contained Storage Area for Sewer Hose
- One-Piece Fiberglass Shower
- Shower Diverter, Hose and Head Antique Brass Finish, with Slide Bar for Shower Head with Soap Dish
- Shower Light on Ceiling inside Shower
- Antique Brass Framed Shower Door with Obscure Glass

Options

- Bathtub
- RV Sani-Con 2 System, Holding Tank Flush System
- Insta-Hot® Water System
- 10-Gallon Gas/Electric Water Heater with Electronic Ignition

Heating, Vents and Air Conditioning

- One 13.5M BTU Air Conditioner with Ducted Air and Wall Digital Thermostat, Low-Profile Ford and Workhorse
- 31M BTU Electronic Ignition Furnace
- Electronic Dash AC/Heat Climate Control System
- In-Floor Ducted Heating System with Metal Floor Registers
- Kitchen Powered Attic Fan with Wall Control of Automatic Dome and Fan Power
- Bath Powered Attic Fan with Wall Control of Automatic Dome and Fan Power
- Attic Fan with Rain Sensor with Electronic Wall Thermostat, Fan Located above Electro-Majic™ Bed

- Metal Floor Registers Antique Brass
- 12V Wet Bay Heater

Options

- One 13.5M BTU Air Conditioner with Heat Pump, Ducted Air and Wall Digital Thermostat, Low-Profile Ford and Workhorse
- Fantastic 12V Attic Fan with Rain Sensor with Electronic Wall Thermostat Kitchen
- Fantastic 12V Attic Fan with Rain Sensor with Electronic Wall Thermostat Bath

Windows, Doors and Awnings

- Radius Flush-Mount Dual Pane Safety Glass Dark Tinted Slider Windows
- Radius Entrance Door with Clear Glass, Roller Shade, Screen Door and Anti-Skid Steps
- Interior Grab Handle and One Exterior Grab Handle
- Eclipse Automatic Patio Awning

- Topper Slide-Out Awning (29RBD)
- Protecta Glaze Tinted Plexiglas® Skylight in Bathroom

Options

- Window Awnings to Slide-Out House Window (29RBD)
- Window Awning on Sidewall

Safety

- Fire Extinguisher
- Deadbolt Lock on Entrance Door
- 120V GFI Protected Circuit, Kitchen, Bath and Exterior
- LP Gas Detector
- Smoke Detector

- Carbon Monoxide Detector
- Pilot and Co-Pilot Three-Point Seat Belts
- Third Brake Safety Light
- Egress Windows

Live out loud.

Now we've done it. We've taken the luxury motorhome and given it a fun streak. And to top that, we've made it exceedingly affordable. Yes, we're happy to introduce the rebellious new 2006 Safari lineup. While we invite you to compare these super-sized values with other motorhomes, we won't be surprised if you cut to the chase and hit the road in a new Safari. Because we know how you love a great deal.



Cheetah

Trek®

Simba®



Live out loud.

www.safarimotorcoaches.com

91320 Coburg Industrial Way, Coburg, OR 97408

1.800.458.8735