



Volume 5 Number 3



TREK TRAVELS



July 2018

President's Message

I am writing this looking out over the waters of Coos Bay from my space at the Mill Casino & RV Park. The FMCA Northwest Area Rally is just winding down with a glass float excursion this morning being the last of the planned activities.

It has been a very fun week for the twenty three members of our club that attended the Dune Country Pre Rally near Florence, OR at the Woahink Lake RV Resort. We also had the Turners come by to join us for a tour of the Coast Guard Station at Florence and dinner on Monday evening. This Rally was hosted by Al Zimmerman with Dan and Debbie Maas and they did a great job. There were fun activities, interesting talks, great food, time to visit with old friends and make new ones.

On Tuesday seven motorhomes from the Pre Rally caravanned to Coos Bay to attend the Milling Around Coos Bay FMCA W Area Rally. Our club again manned the FMCA store with some volunteer help from other clubs. The new sales system has the bugs worked out and makes working the store very easy. You should try it!

This was the first rally and gathering of the year for our club and it was great to get together again. We have the ever popular Port Townsend Rally coming up in August. Lynn and I, with the help of Hoop and Linda Hooper, are hosting a rally in the redwood country of Northern California in September. What fun it is to spend time with friends and catch up. It is time to start thinking about next year!!! If you are considering hosting a rally or have a destination that you think would be good talk to Ron Mahugh or Mary.

They are our Rally Coordinators and they can help you get the ball rolling.

This was my first trip this year with the motor home so we had a few small maintenance issues to deal with. Plumbing (my favorite) and door

(Continued on page 2)

RALLY SCHEDULE

(To be Wagon Master for a rally, contact Ron Mahugh, Rally Coordinator, at Ronski16@comcast.net)

August 9 – 13 Port Townsend Trek Rally
Ron Mahugh and Mary Burchett

September 20-23 Rally in the Redwoods
Klamath, CA
Mike & Lynn Ashbridge
James & Linda Hooper

Other Rallies

July 18 – 21 FMCA 98th Convention
Gillette, WY

August 27 – Sept 1 Safari International
30th Anniversary Rally
Shawnee, OK

2019 Rallies Needing Wagon Masters

- Spring
 - Pre-rally near Albany
 - Summer
 - Fall

Be a Wagon Master & share the fun!

President's Message, continued

hardware that had reached its limit of use. It seems to be part of owning a motor home. I was going to say owning an older motor home, but I see the newer models with the same sort of problems. One more thing that I appreciate about this club – no matter what problem you may have with your rig, there are people in the club who have been there or have the background to help you solve your problem. As soon as the hood goes up or the tools come out, people start gathering to offer advice and help with whatever the situation is at hand. And of course there is TREK TRACKS. A great resource for all things Trek.

I will close for now and go in search of a glass float on the beach.

Safe travels and hope to see you soon,
Mike Ashbridge

FMCA – THE GOVERNING BOARD - & GILLETTE

One of the strengths of FMCA is that it is a representative association of members. FMCA currently has 370 chapters and over 76,000 members. That is an increase of 2,589 through the first 7 months of the fiscal year.

Each chapter has a voting representative on FMCA's Governing Board (Al Zimmerman). The Governing Board meets during the summer convention (Gillette in 2018) to approve the annual budget, elect national officers, and make major decisions affecting the organization.

This year's issues are not as pivotal as some years:

- Adopt a definition of RVs to be approved by the membership and become part of the constitution. A definition was developed last year, but needs to be officially adopted.
- Enable members to vote electronically on certain issues.
- Proposal suggested by a member to change the make-up of the Governing Board and the Executive Board. (Proposal is not recommended for adoption.



SAFARI INTERNATIONAL 30th ANNIVERSARY GATHERING Shawnee, Oklahoma August 27 – September 1, 2018

A gathering of Safari owners from all across the land. They hope to have caravans coming from all four areas of the U.S. They are inviting anyone who has a Safari, anyone who has ever had a Safari and anyone who would ever like to have a Safari!

According to Lee Buckley, Safari International NW Vice President, Safari International is throwing one humongous blow-out bash that just happens to be located a convenient 2,100 miles (more or less) from where many of us live out here on the left coast.

The local SI fun clubs (Safari So Good, Safari of SoCal, and Safari R Us) have combined forces to put together an informal Pre-Rally in Oklahoma City in the three days leading up to the start of our 30th Anniversary Rally in Shawnee. Lee and his helpers have put together a time-line to gently lead from an initial rendezvous in Silverton, Oregon with reasonable stops along the way, to arrive in Oklahoma City for the pre-rally. From there, it's a short convoy/caravan to Shawnee on Monday morning, the 27th of August.

This is not a formal rally, so there are no registration fees or catered meals involved.

For more information on these rallies, check out the Safari International website: <http://www.safari-international.org>. You can also check the NWTFC website for information: www.nwtfc.com

MILLING AROUND COOS BAY

FMCA NW Area Rally

Highlights

Seven NWTFC coaches caravanned to the Mill Casino on Tuesday, July 16. That evening was the Hot Dog Bash with all the trimmings.

Once again NWTFC staffed the FMCA store. NWTFC members who volunteered were: Mike and Lynn Ashbridge, Gary and Lucy Brown, Gary and Irva Cooper, Tom and Jolyne Selvidge, and Al Zimmerman. Additional volunteers were supplied by Coaches for Christ.

On Wednesday the store was set up in the vendor area. Dinner that night was very informal with a number of food trucks providing various food choices. Rally attendees received vouchers to purchase food from the food trucks. Entertainment was provided by the "Young Bucks."

On Thursday the NW Area Rally officially opened. Various workshops were presented over the next three days. Several comments were received about the variety and new topics that were presented.

Thursday's dinner was one of the special features – salmon prepared by the Coquille tribe over an open fire in the traditional manner.

Friday night was open, so Al Zimmerman invited all the NWTFC attendees to his home for BBQ hamburgers. A fun time was had by all.

Saturday afternoon the store was packed up and another year was in the books. Entertainment on Saturday evening was a hypnotist who worked with a number of volunteers from the audience. These volunteers did a number of strange things.

On Sunday everyone was on the road again.

Next year's NW Area Rally will be at the Linn County Fairgrounds in Albany June 6-9. Plan now to attend.



What was memorable about the 2018 NW Area Rally?

- NWTFC had members dry camping, in the RV park, and in the 30 amp parking area – and we managed to find each other.
- Gary and Lucy Brown had some work done on their Trek.
- Tom and Jolyne Selvidge attended their first NW Area Rally and jumped right in to help. They are a great addition to the club.
- Bob Fitzgerald tried to sell some tires, but at the end of the rally they went back into his Honda. I thought Bob could sell snow to Eskimos.
- Gary and Irva Cooper rode their bikes all over Coos Bay. They are a great example for us.



PORT TOWNSEND RALLY

August 9 - 13, 2018

Location

Port Hudson Marina & RV Park
Port Townsend is a wonderful historic town to explore:

- Fun shops & good eats
- Fort Worden
- NW Maritime Center
- Dolphin & whale watching tours
- And so much more
-

Check-in 8/11 at 1:00 pm

Check-out at 8/15 Noon

RALLY UPDATE

- 23 coaches coming
- **Port Hudson RV Park is full.**
- Call Port Hudson directly to inquire 360-385-2828
- **Contact Ron to get on a waiting list.**
- Stay at Jefferson County Fairgrounds – 2.2 miles to rally site. \$25/night. No reservations. Always sites available.
- Stay at Fort Worden State Park – 1.4 miles to rally site. Reserve thru WA State Parks.

Contact Ron Mahugh for more info

ronski16@comcast.net

More information to come to registered attendees from Ron directly.

I Never Forget Anything!

A doctor advises an elderly couple to write themselves little notes to combat their forgetfulness. When they get home, the wife says, "Dear, will you get me a dish of ice cream? Maybe write that down so you don't forget?" "Nonsense," says the husband. "I can remember a dish of ice cream." The wife replies, "Okay. Would you add some strawberries on it?" To which the husband replies, "No problem — a dish of ice cream with strawberries. I don't need to write that down." And so he goes to the kitchen and his wife hears pots and pans banging. The husband finally returns and presents his wife with a plate of bacon and eggs. She looks at the plate and asks, "Hey, where's the toast I asked for?"

From IRV2



*"I thought I'd give the RV a tune-up.
After a technician fixes all the damage
I caused, we can leave."*



Rally in the Redwoods

Klamath, CA

September 20-23, 2018

Directions: Coming **from the south**, cross the bridge and immediately take the Terwer Valley/Hwy 769 exit on your right. At stop sign, turn left, go under Highway and straight into the park. **From the north**, continue down Hwy 101 until the Terwer Valley/Hwy 769 exit, at the stop sign, turn right and enter **the** park.

Location

Klamath Camper Corral

18121 US-101 Klamath, CA

Located at the north end of the Golden Bear Bridge on Hwy 101.

With over 50 riverfront acres in the heart of the Redwoods National Park, 3000 feet of river frontage, and a sunny location that is just beyond the prevailing fog line, Klamath's Camper Corral is the ideal base camp from which many features of Northern California's scenic Wild River Coast. Nearby attractions include the TREES OF MYSTERY and the Tour-Thru Tree

Klamath Camper Corral will supply pizzas on the arrival night. Choices are pepperoni, ultimate meat, combo and cheese.

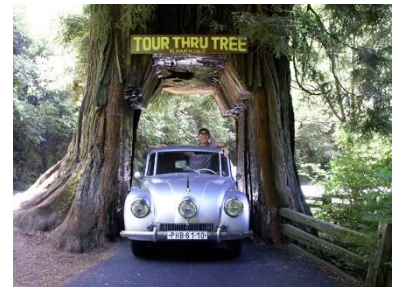
Rally Fee: \$65(includes 1st night camping, pizza and a continental breakfast) Attendees pay for 2 nights upon arrival. (\$45/night)

Make checks payable to NWTFC.

Mail checks and registration form to:

Mike & Lynn Ashbridge
16819 S Holcomb Blvd.
Oregon City, OR 97045.

For more info contact Lynn Ashbridge, lynppippin@gmail.com



Registration and checks need to be received soon!

Name(s) _____

Address _____

City _____ State _____ Zip _____ FMCA# _____

Email _____ Home Phone _____ Cell _____

RV Model _____ Year _____ License# _____ State _____

RV length _____ Towing a car? Yes or No

Food Allergies? Yes or No If Yes: _____

RALLY REPORTS



DUNE COUNTRY RALLY

Florence, OR

2018 Pre-rally to FMCA NW Area Rally
June 16 - 19

Wagonmasters: Al Zimmerman
Dan & Debbi Maas

12 coaches gathered at Woahink Lake RV Resort, just south of Florence on the Oregon coast. Rally attendees included: Mike and Lynn Ashbridge, Bob Beers, Gary and Lucy Brown, William and Joan Quant, Tom and Diana Schramm, Bill and Paula Shull, James and Linda Hooper, Richard and Nancy Harris, Tom and Jolyne Selvidge, Dan and Debbi Maas, Bob and Linda Fitzgerald, Gary and Irva Cooper, Dan and Debbi Maas, and Al Zimmerman. Tom and Jolyne Selvidge were new comers to the chapter.

Day 1 – Saturday, June 16

One of the highlights (at least for the men) was the classic cars that the resort owner had on display. This rally was a pre-rally to the FMCA NW Rally at the Mill in North Bend. Dinner Saturday night was a new item on the rally menu – fish tacos prepared by Debbi Maas. They were a hit with everyone. Dinner also included Spanish rice, and refried beans.



Dan Maas & Tom
Selvidge enjoy fish tacos



Darlingtonia californica is a
carnivorous plant native to
Oregon and northern
California's few areas of
boglands



Richard Harris & Bob
Fitzgerald know where
the food is

Day 2 - Sunday, June 17

Sunday began with a continental breakfast. One of the challenges put to the rally attendees was to discover Darlingtonia State Park and the carnivorous plants. It was an amazing sight to see such a large group of these green hooded plants that preyed on insects that came near. Other people wandered along the bay front, took a dune buggy ride, or relaxed during the afternoon.

Dinner was potluck. It is always interesting to see the various dishes that are prepared by the chapter cooks. Card bingo was the evening entertainment with Al Zimmerman serving as the caller for the game. Lucy Brown, Mike Ashbridge, James Hooper, Richard Harris, and Bill Shull were all winners – but it was Nancy Harris who won the big pot at the end.



Day 3 – Monday, June 18

Pancakes and sausages were on the menu for breakfast. In the afternoon there was a group tour U.S. Coast Guard Station Siuslaw River. An informative presentation on the history of the Coast Guard in the area was followed by a tour of the station's 47 foot motor lifeboat. These special boats are the backbone of the lifesaving work of the Coast Guard. They are designed so that if they roll over, they come back up and keep going. The motor lifeboats operate up to 50 miles off shore. Larger cutters cover the area beyond.



Dinner was spaghetti with a meat sauce, salad, garlic bread, and ice cream bars for dessert. The evening program featured two ladies familiar with the area. Elsie Moore, a descendent of pioneer families, talked about her life growing up on a local farm. Judy Fleagle provided a historical overview of the Oregon coast bridges designed by Conde McCullough. Fleagle is author of McCullough's Coast Bridges and Crossings.

Day 4 – Tuesday, June 19

The final day began with a continental breakfast. Seven coaches caravanned to the FMCA NW Area Rally at the Mill Casino in North Bend. We arrived at the Mill in good order.

IT HAPPENED TO ME & NOW YOU HAVE BEEN WARNED

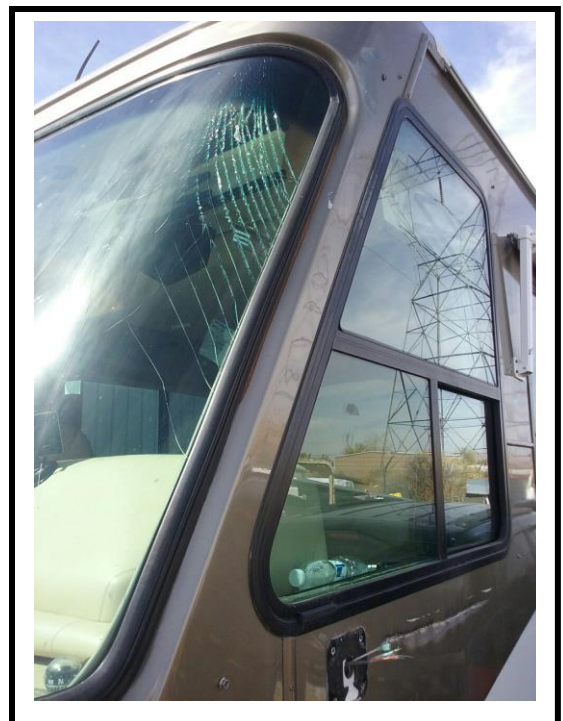
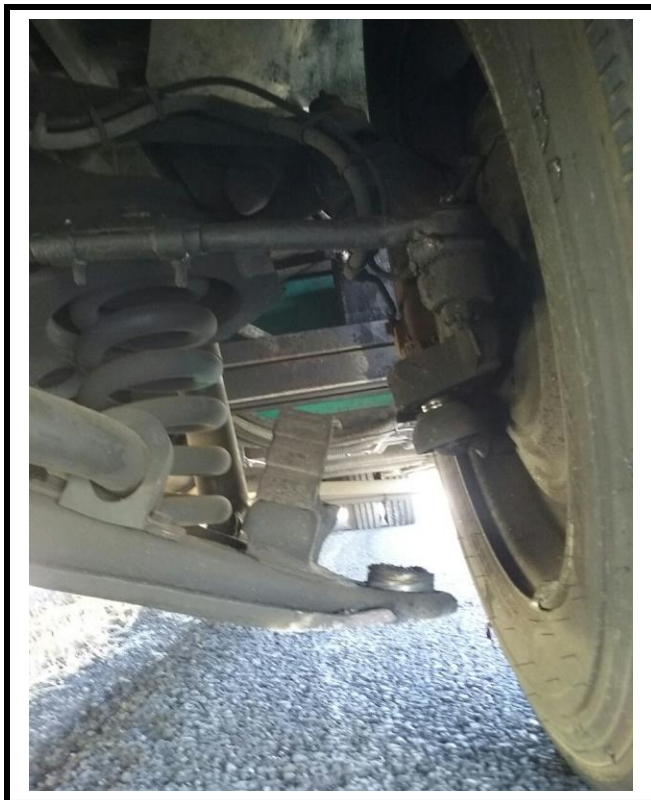
I thought it would be a good idea to share a disturbing experience that Marie and I had this winter on our way home from Arizona. The driver side front of our motorhome ended up sliding along on the pavement, smoke and sparks boiling out for about 250 yards. The failure was the separation of the lower ball joint from the lower arm. The cup stayed in the lower arm. Lower arm went to the pavement and the tire went up into the wheel well. Failure appears to have been due to wear, not failure to do proper maintenance. Our motorhome has a little more than 114,000 miles on it. Maybe more than many others have but there may be a lesson here for all of us.

I talked to my local front end mechanic and he told me that they see ball joints that have failed every now and then. I asked if there was a way check your front end to determine if replacement of ball joints may be needed. He said that if the ball joints are becoming sloppy there will be movement of the spindle (tire movement) when you raise it off the ground and try to shake it by hand. Excessive effort to stay in your lane may be another indicator. We were experiencing that.

There was little fiberglass damage. It's a wonder that the tire did not come up thru the floor. All weight was setting on the tire and it is tall enough that the fiberglass was about two inches off the ground. When it hit the ground I was pulled left about 3 feet left before I was back in control. No cars on the road so just coasted back to my side of the road.

Worst part was that since the wheel could not be used by the wrecker to haul us away we ended up waiting 30 hours before a rollback truck was found to take us in for repair. **We are safe, just not an experience to repeat.**

This was an experience I would not want to have again. I am thinking seriously of just replacing the rest of the front end ball joints. John Turner



NWTFC OFFICERS & Committee Chairs

President – Mike Ashbridge
mikeashbridge@comcast.net

Vice President – Paula Shull
bpshull@frontier.com

Secretary – David & Sue Pierce
suedavidpierce@gmail.com

Treasurer – Sue Bjornson
skbjornson@gmail.com

Natl. Dir – Al Zimmerman
zimmeralz@gmail.com

Alt Natl. Dir – Vacant

Past President – Steve Webber-
Plank
donwebberplank@mac.com

Rally Coordinator – Ron Mahugh
ronski16@comcast.net

Webmaster – Mary Carlson
webmaster@nwtfc.com

Historian – Jeannette Block
ed.jnet@earthlink.net

Newsletter Editor
Al Zimmerman

Feel free to contact
NWTFC officers or
committee chairs with
questions or suggestions.

NWTFC Website
www.nwtfc.com



The Northwest Trek Fun Club (NWTFC) was formed with the idea that Trek owners are people who are unique because the Trek design is quite unique. They are people who like to get out and visit the very beautiful sites and history of North America. However, they do not want to do it in a huge motor home. The Trek design gives us the comforts of home but still is small enough to get into those off-the-beaten-track sites.

NWTFC was established in 2004 and currently has about 80 coach members, including Treks spanning the 1991 Isuzu to the 2008 28RB2 and the 2016 Trek. We pride ourselves in fostering new friendships and knowledge of the Trek. We stress that our club's middle name is F-U-N.

We plan several rallies each year in several states and communicate with our members by email, newsletter, and through the club website. NWTFC territory covers WA, ID, OR, AK, MT, BC, Alberta, Northwest Territories, and the Yukon. All Trek owners, regardless of their home state, are welcome to join or to attend our rallies as guests.

Membership dues are \$10 per calendar year. See the website for a membership application.

When your membership is processed, you will be given a password access to the secure Members Only page of the NWTFC website.

NWTFC is a chapter of FMCA and very closely associated with SAFARI International.