



HAPPIJAC Power Bed Lift

Chain Clamp Installation

First: Determine correct location for chain clamp.

Chain clamp must be installed at the same location on all 4 lift rails to ensure a level bed platform.

1. At one of the C-channels where the trolley is still attached to the chain, measure the distance from the bottom of the c-channel to the top of the trolley (Photo A).
2. Using an erasable marker, mark this location on the c-channel where the chain clamp is being re-installed, then move the top of the trolley to this mark. (Photo B).
3. Overlay the fingered piece of the clamp on the trolley aligning the holes in the fingered piece with the top 2 holes in trolley. With the fingers pointing toward the side of the chain to be attached to the trolley, mark the location of the upper most finger. (Photo C).

IMPORTANT: The trolley must be hooked to the proper side of the chain or the trolley will move in the wrong direction. Look closely at the other trolley and chain on the same side assembly and determine to which side of the chain the trolley is attached.

4. Slide the trolley down out of the way and insert the fingered piece into the chain with the upper most finger aligned as closely as possible with the mark. (Photo D).
5. While holding the keeper over the fingered piece, move the trolley up until the top two holes in the trolley line up with the holes in the keeper and the fingered piece. (Refer to Photo's E & F)

Hint: Get the top hole aligned and insert a nail, wire, etc. into this hole. The parts will not fall while attempting to insert the other bolt.

6. Insert and securely tighten both bolts. Be sure star locking washers are used. (Photo F)



Photo A



Photo B

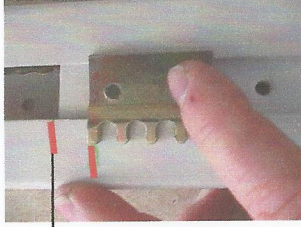


Photo C

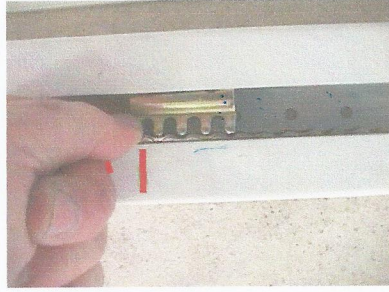
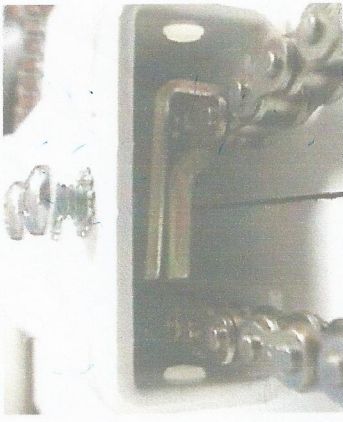


Photo D

Photo E



Photo F



Old Style stack up
(3 Pieces)

New Style stack up
(2 Pieces)